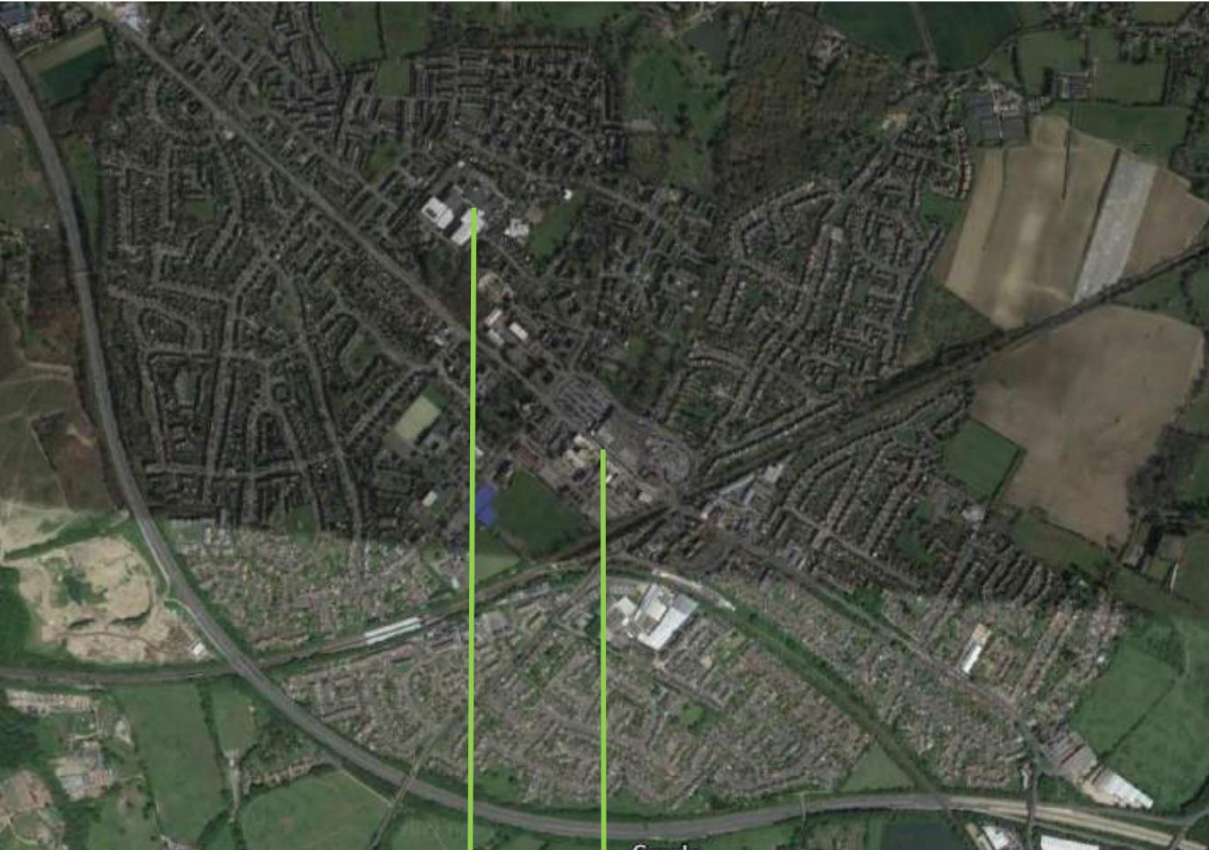




B O N D B R Y A N

White Oak Residential Development
Swanley

Situation



Development site

Town Centre

Area for residential development

Built 2022

White Oak Residential Development

Context



Leisure centre



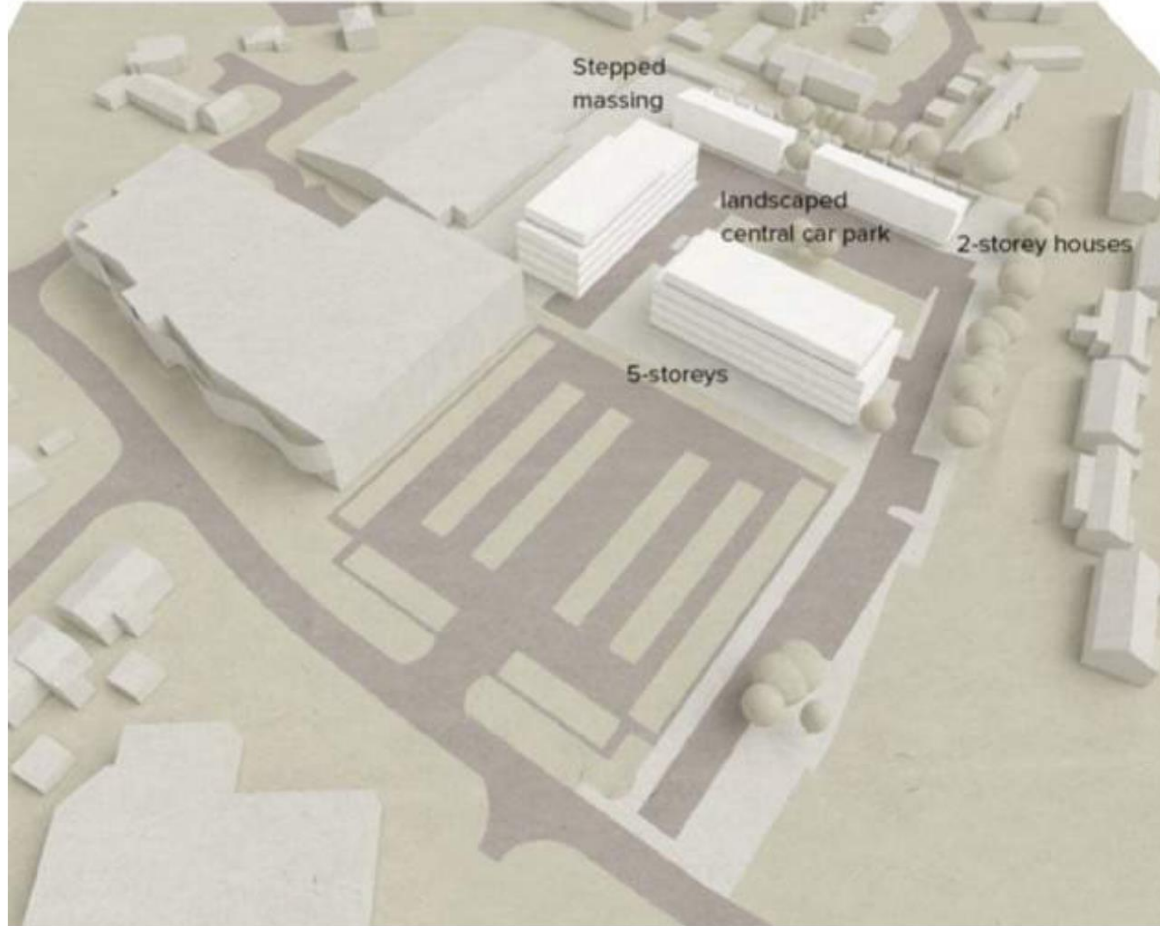
2 storey dwellings



Apartment blocks

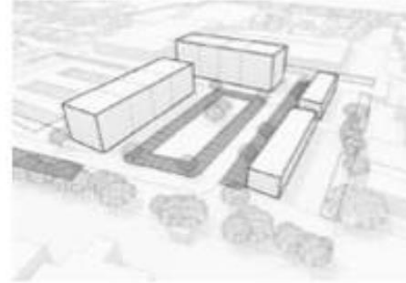
White Oak Residential Development

RIBA Stage 1 design

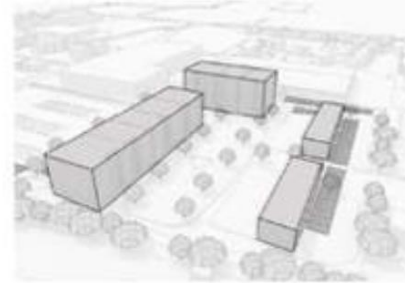


White Oak Residential Development

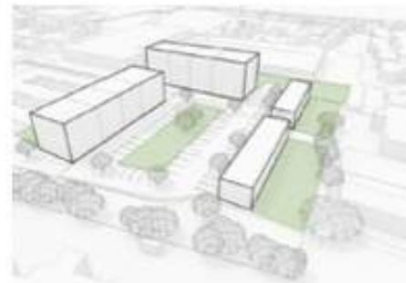
Design development



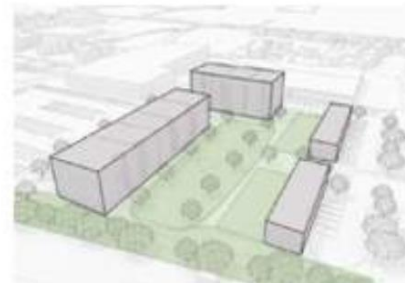
Stage 1 proposal: dominating car park arrangement



Potential to push parking to perimeter



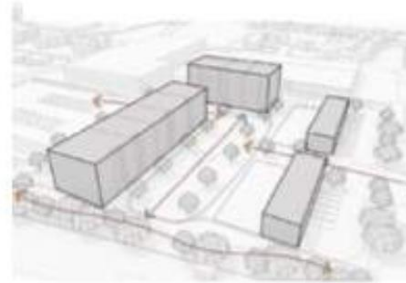
Stage 1 proposal: fragmented green space



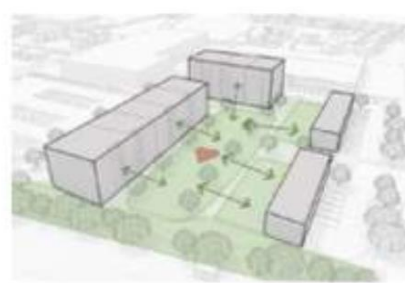
Potential to bring green spaces together



Precedent images: communal green space and varied building forms



Potential to improve permeability and connectivity through the site

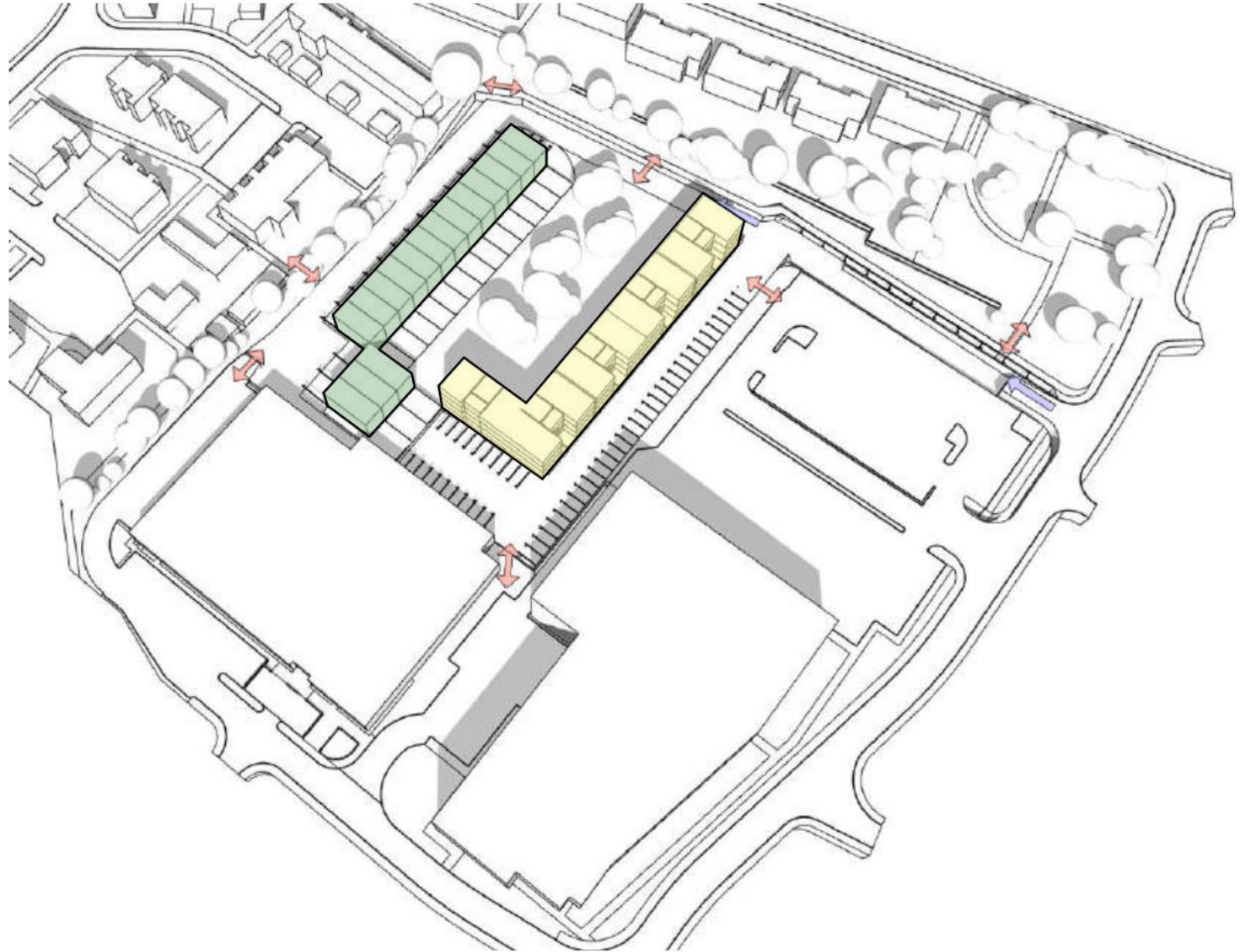


Creating a green heart with building frontages responding to the shared green space



White Oak Residential Development

Design development



White Oak Residential Development

RIBA 2 – Option B (Preferred Option)



Typology				
Key	Type	Number of storeys	NDSS Target area (sqm)	Quantity

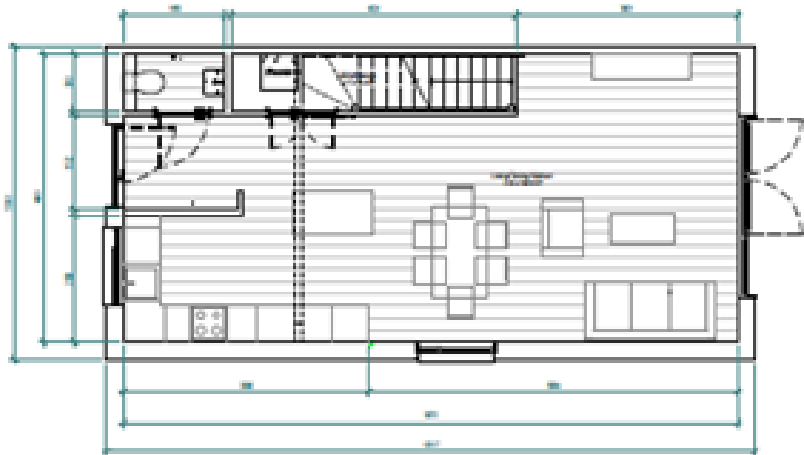
Apartment 4 storeys block				
	1b2p	1.00	50.00	19
	2b4p	1.00	70.00	31
				50

House				
	3b5p	2.00	93.00	13
				13
				63

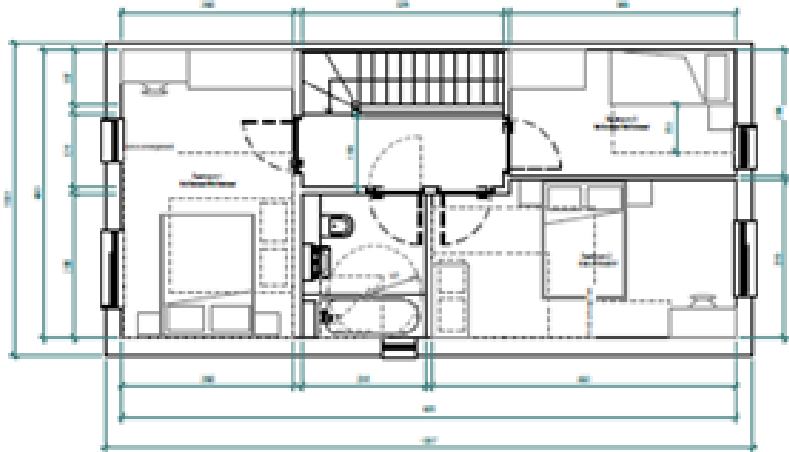
Parking Schedule		
Type	Quantity	

Space_Parking	68
---------------	----

3-Bed house internal layout



Ground floor plan



First floor plan

2-Bed flat internal layout





White Oak Residential Development

Modular Construction



Artist's Impressions

